

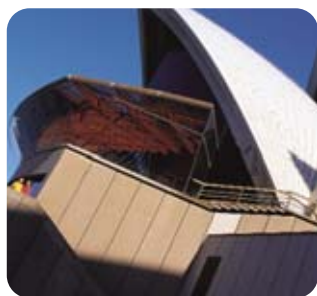


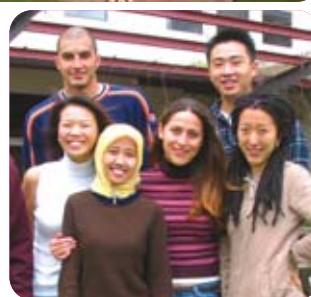
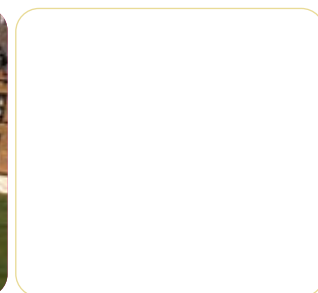
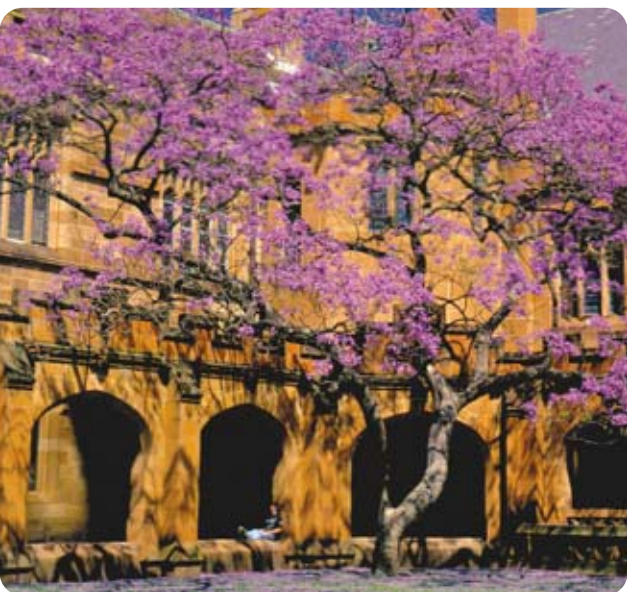
The University of Sydney
Australia



2007

Centre for
English Teaching





Sydney, an international city

Sydney is one of the world's most beautiful cities. It has a magnificent harbour, famous beaches, wildlife parks and a wide choice of restaurants and shopping facilities. The dynamic downtown area blends the modern with the traditional.

The city's beautiful heritage architecture gives Sydney a particular charm. It is Australia's most popular visitor destination and an excellent place for living and study.

Sydney is safe, has a pleasant climate, a clean environment and is convenient for travel to other parts of New South Wales and Australia.

Where we are



Centre for English Teaching (CET)

The University of Sydney, established in 1850, is the oldest and one of the most prestigious learning and research institutions in Australia. CET is the English Language arm of the University.

At CET we offer innovative programs. Our friendly and caring environment will make your study in Australia a worthwhile experience.

We are relocating to the main campus. Our new classrooms are equipped with state-of-the-art visual and audio technology. Our teachers have extensive experience both in Australia and overseas. They are committed to providing the highest level of teaching and support. CET also provides free email and internet access.

We are accredited by the National ELT Accreditation Scheme (NEAS). NEAS is an independent body ensuring high standards. Visit www.neasaustralia.com for more information.

Other information about us

- We offer multiple entry dates throughout the year
- Classes are held in morning and afternoon shifts
- Flexible 5-week modules
- Classes are 20 hours per week (unless specified)
- We test you on arrival to place you in the class which best suits your level
- For new students, the first day of each term is an orientation day
- We offer classes at the:
 - Wentworth Building, main campus
 - Holme Building, main campus
 - Sydney University Village



Our courses

General English programs

- General English (EGP)
- Cambridge English programs*
 - FCE and CAE exam preparation
- Study tour packages
 - English combined with activities
- Working Holiday programs**
 - Master English class
 - English and Employment
- Professional programs
 - TESOL Professional development
 - Special Purpose English
 - Tailored Group programs

Academic Language programs

- Academic English (EAP)
- Intensive Academic Writing (IAW)
- Intensive Entry Program (IEP)
- Graduate Academic Skills (GAS)
- IELTS preparation
- Advanced Skills for Academic Success (ASAS)

* Subject to enrolment numbers

** Subject to approval in 2007

What's new?

Academic Bridging Program

The University is now offering an Academic Bridging Program for those who complete their English language requirements between semester entry times. It is an opportunity to focus on the discipline areas and study skills you may need for your formal degree. The program is eight (8) weeks in length. It will be offered twice yearly in May and October. For packaged students in particular, the program is recommended if you do not wish to return home after having completed your English study at non-semester entry times.

Summer and Winter School

Consider accelerating your degree after your English course – visit www.summer.usyd.edu.au

We also offer...

IELTS testing

Sydney University is an international IELTS testing centre. It is also an official IELTS pre-testing institution. This provides the opportunity for candidates to experience trial IELTS tests. IELTS tests are held regularly at the University's Cumberland campus.

For more information please go to the website www.usyd.edu.au/cet/ielts



TOEFL iBT test

CET has recently become a TOEFL iBT testing centre. Testing will commence in the near future.



General English programs

General English programs attract students from all over the globe.

■ General English (EGP)

We emphasise communication, focusing on speaking and listening. Your writing and reading skills will also improve.

We help you achieve the confidence to live and work in the English-speaking world. EGP offers flexible entry, with students being able to enter ongoing courses any Monday. Courses are designed for flexible progress around 5-week modules.

■ Cambridge English programs*

- FCE (First Certificate in English)
- CAE (Certificate in Advanced English)
 - Recognised worldwide in commerce, industry and education
 - Emphasis on real-life tasks
 - 10-week courses leading up to the exams
 - Optional study retreat

* Subject to enrolment numbers



"Sono rimasta impressionata da quanto ho potuto apprendere in pochi giorni grazie alla bravura dei miei professori. Gli insegnanti veramente preparati sanno quello che fanno e sanno come raggiungere l'obiettivo con i loro studenti."

Marina Paci, Italy

■ Study tour packages

- Programs combining English classes with educational, cultural, industry or recreational activities.

Learn English while you have fun, meet new friends and discover Sydney! We can arrange study and holiday packages to suit your group's needs, large or small (minimum age 16).

Our services can include custom-designed English programs, airport transfers, accommodation and excursions or visits.

■ Working Holiday programs*

- **Master English Class** is developed for high level English learners who would like a short intensive English program before internship/work experience. The course is based around weekly themes.
- **English and Employment programs** develop your communication skills and professional confidence along with assistance in seeking employment.

■ Professional programs

- **TESOL Professional Development programs** focus on TESOL methodology plus language skills enrichment for groups of language teachers worldwide. We can offer this training in Australia or off-shore.
- **Special Purpose English programs** are designed and developed for any professional group eg. Academics, Lawyers, Nurses, Doctors, Accountants and Executives.
- **Tailored Group programs** meet the needs of many organisations and groups such as Governments, travel companies, student and teacher groups.

* Subject to approval in 2007

Academic Language programs

■ Academic English (EAP)

Pre-intermediate to higher advanced (6 levels)

Our EAP programs are designed to help you succeed confidently in your university or other tertiary studies. They assist you to improve your English and your academic study skills.

- Each EAP level normally takes 10 weeks (2 x 5-week modules)
- We offer entry to EAP every 5 weeks
- IELTS preparation is an integral part of EAP

Our advanced level programs prepare you for study in all discipline areas, whether at undergraduate or postgraduate level.

■ Intensive Academic Writing (IAW)*

Very advanced level

An intensive 5-week academic writing course designed for students who have:

- IELTS 6.5 or higher with a writing score of 5.0 or higher or
- TOEFL 575 or 233 (computer based) with TWE 4.0 or higher or
- TOEFL iBT 90 or higher

■ Intensive Entry Program (IEP)

Advanced level

An 11-week high level program which facilitates successful university entry in either semester one or two. It is a most successful program, which is intense and challenging, reinforcing academic and language skills.

■ Graduate Academic Skills (GAS)*

Very advanced level

A very high level 5-week intensive academic English course designed for students who have reached at least the equivalent of IELTS 6.5. It is organised as a task-based program with weekly themes.

GAS reinforces academic study skills rather than focusing on English. It will make your transition to academic study much easier.

■ IELTS Preparation

CET offers two types of IELTS preparation:

- As part of the EAP program
- As a special part-time IELTS program

■ Advanced Skills for Academic Success (ASAS)

Higher advanced level

ASAS is a 4-week intensive program normally offered to government sponsored students, particularly AusAID, World Bank and ADB students.

** subject to enrolment numbers*

Tests for university entry

CET university entry test (e-test)

A test developed by CET and recognised by Sydney University. If you pass the e-test and meet the necessary academic entry requirements, you can progress directly into your degree at the University (subject to visa status). No further English test is needed. We offer the e-test to students completing their academic language programs at the advanced level or higher.

IELTS test

We prepare you for the IELTS test, which you can take regularly at our IELTS testing centre.

TOEFL iBT test

CET has recently become a TOEFL iBT testing centre. We also offer TOEFL preparation.

Who can take the e-test?

Option 1

Minimum
10 weeks
study at CET

AND

Completing
advanced or higher
advanced level of
academic English

Option 2

10 weeks
study at CET

AND

Commenced CET with
IELTS 6.0 or
CULT 70% or
TOEFL 550 and
TWE 4.0

We offer the e-test regularly to facilitate entry to the University.

Accommodation

Accommodation

We want you to feel 'at home' in your new environment in Australia while enjoying your study experience. We work with a number of professional accommodation agencies who can help you find somewhere to live, organise your airport pickup if you wish, and place you in temporary accommodation if that is what you need. They may even assist you in finding appropriate work if you are on a 'working holiday' visa.

The accommodation providers we work with are professional and will ensure a high level of service to meet your needs.

They are:

Carrycord Homestay – www.carrycord.com

Meridian Homestay – meridian@idx.com.au

Global Experience – www.globalexperience.com.au

Auzzie Families – www.auzziefamilies.com

Types of accommodation

Homestay accommodation

We encourage our students to stay with an Australian family. It is a good way to practise English while learning about the Australian way of life. Homestay families provide a furnished bedroom and use of the house. You also get breakfast and dinner from Monday to Friday. During weekends, breakfast, lunch and dinner are provided.

Homeshare accommodation.

You can try the following websites:

www.flatmates.com.au

www.flatmatefinders.com.au

www.domain.com.au

www.realestate.com.au

Furnished apartments

If you prefer independent living, we suggest you consider renting a furnished apartment. Furnished apartments can be leased from one week to six months. We recommend you take temporary accommodation for the first week. During that first week, our accommodation providers can assist you with a list of apartments and websites.

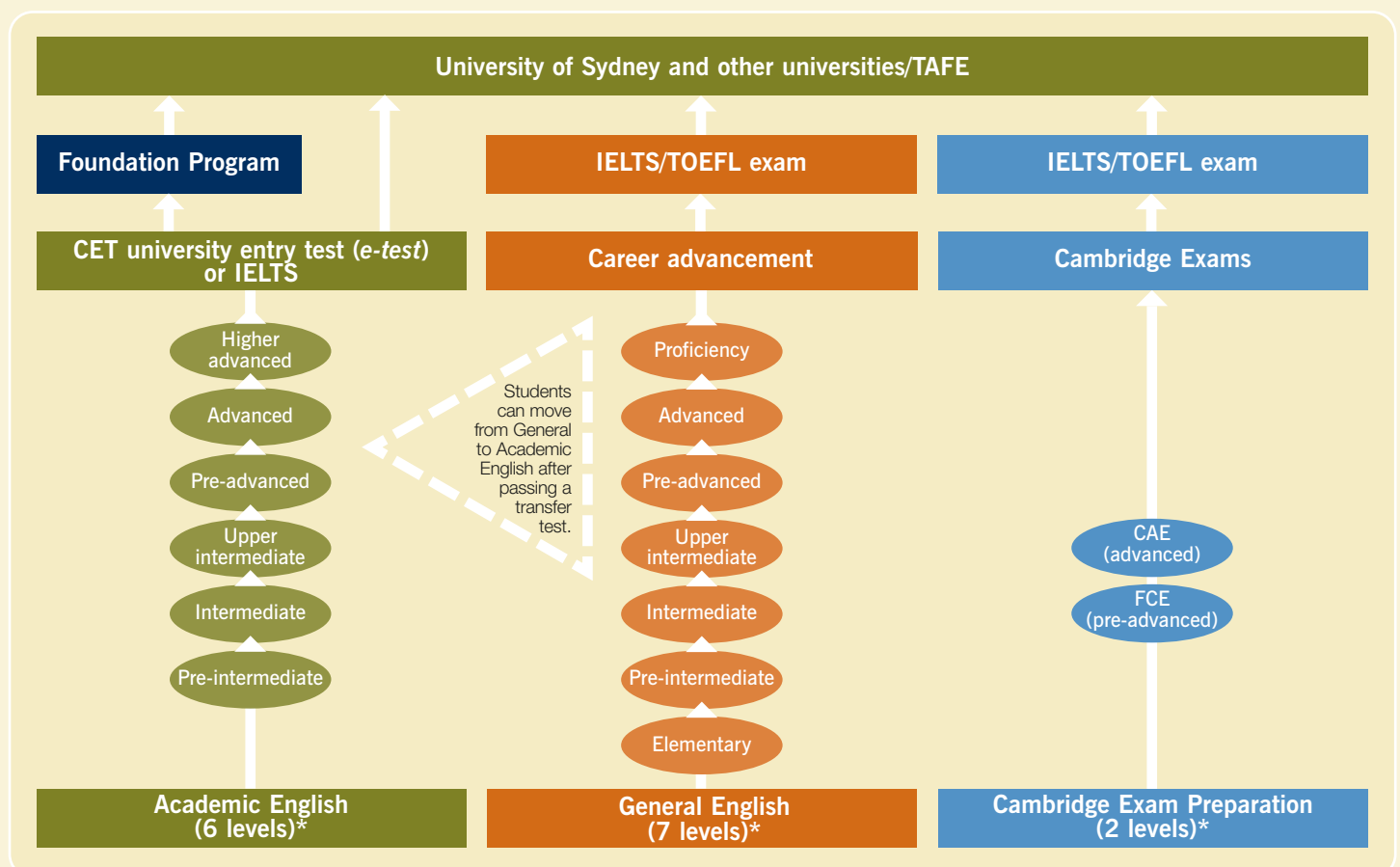
If you wish to find your own accommodation, you will need to visit the locations and make your own decisions. Sharing an apartment off-campus is a good way to mix with Australian students. A guide to the cost of these is:

- Unfurnished apartments – sharing two or more (A\$150+ per person per week)
- House – group of three people or more (A\$140+ per person per week)

Hostel and lodge accommodation

In this type of accommodation you can expect a room (sometimes with bath) and shared living and kitchen facilities. A guide to the cost of these is between \$150 – \$250 per week.

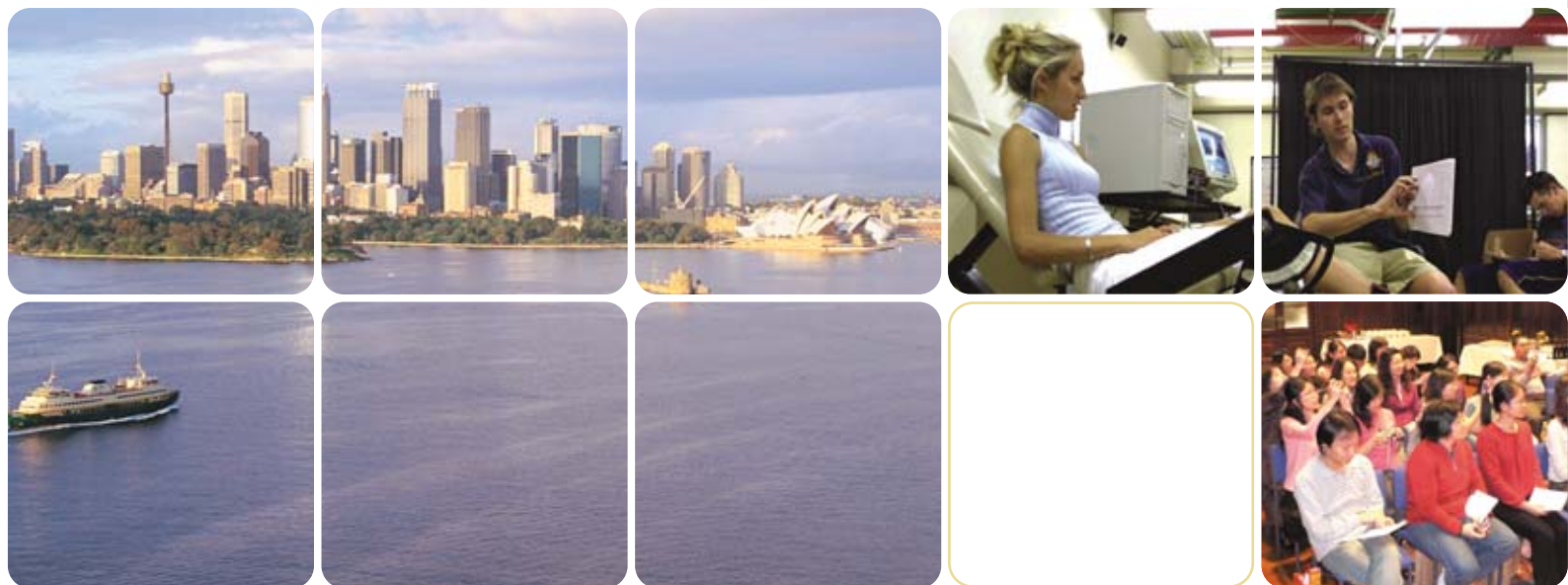
Your pathway to success



Note: each level is 10 weeks (2 x 5-week modules). Students can move from General to Academic English after passing a transfer test.

* All levels offered subject to enrolment numbers and availability.

Visit our website
www.usyd.edu.au/cet



How you apply

Complete the application form in this brochure and return it by fax or mail to:

Admissions Officer
CET, Sydney University (G01)
NSW 2006 Australia
Fax: 61 2 9036 7908

OR apply online at www.usyd.edu.au/cet

If you are applying for a package, you will need to provide 3 documents:

1. CET application form
2. Conditional university offer
3. IELTS result (less than 2 years old)

You can also apply through one of our CET agents listed on the website.

Note: Students from level 4 countries should print out the application form from our website and fax it with a copy of their IELTS results and a university offer.

How long should you study English?

CET can suggest a minimum length of study but our recommendation is a guide only.

Want more information?

Visit our website www.usyd.edu.au/cet.



We care for you from arrival to departure

Airport reception – Our accommodation providers can arrange for someone to meet you and take you to your accommodation.

CET orientation program – We introduce you to CET, the University and to Sydney. We take you on a city tour to help you become familiar with downtown areas.

Climate – Sydney has four seasons a year. If you come in winter (June to August), you will need some warm clothing.

Culture – Sydney University has museums, theatres, cafes, art galleries and free lunchtime concerts.

Email and internet access – You will have free access to the internet and email.

Excursions – We arrange regular excursions for our students.

Food – There are cafeterias in the Wentworth Building, around the campus and nearby.

Health care – You have access to the University's own health service.

Libraries – CET library is available to all students Monday to Friday. The University library (Fisher) borrowing rights cost \$50.

Newsletter – You can help produce the CET newsletter 'Challenge'.

Sporting activities – Available at the University for a small fee.

Student Support – Staff will help you with personal, educational and financial advice.

Sydney Summer and Winter School – Consider accelerating your degree after your English course – visit www.summer.usyd.edu.au.

Sydney Bridging Program – The Faculty of Arts is offering a Bridging Program for those students who complete their English requirements between semester commencement dates. A wonderful opportunity to prepare yourself for formal study within the University environment. If you have some time before semester starts, you need not return to your home country.

The University – Sydney University has more than 45,000 students. The campus is like a mini-city.

Working in Sydney – On a student visa you can work part-time up to 20 hours per week. If you are on a Working Holiday Visa please visit www.immi.gov.au.

Do you want airport pickup and/or accommodation?

Our preferred providers are:

Carrycord Homestay – www.carrycord.com

Meridian Homestay – meridian@idx.com.au

Global Experience – www.globalexperience.com.au

Auzzie Families – www.auzziefamilies.com

How to enrol at CET

1. You send your application form by mail, fax or online (online is not available for level 4 countries)
2. CET will send you an offer letter with payment details
3. You send your payment by **Australian dollar bank draft**, by **credit card (Visa/Mastercard)** or by **telegraphic transfer**
4. When we receive your payment, we send you a **Confirmation of Enrolment form** to apply for a student visa. You take this to your nearest Australian Embassy to process your visa. If you are travelling on a tourist visa, we send you a **letter of acceptance**.

Visa requirements

- Some countries require a pre-visa assessment process. You should find out from the Australian Embassy in your country whether this process is needed
- You can study ELICOS programs for up to 12 weeks if you have a *tourist visa* or 17 weeks on a *working holiday visa*. For longer periods you will need a student visa.

Terms and conditions

(please read before you sign)

1) Refund policy:

- a) The administration fee is **non-refundable**
- b) We refund your tuition and other fees if your visa application is rejected. You must notify the Centre for English Teaching **in writing** within **28 days of being rejected**
- c) If you cancel your course more than one month before the course commencement date, you will receive a refund of **100%** of tuition fees paid
- d) If you cancel your course less than one month before the course commencement date, you will receive a refund of **80%** of tuition fees paid
- e) Once you commence your course **you will not be eligible for a refund**. (We define a course as the number of weeks you pay for).

All refunds are sent to your home country

This agreement does not remove your right to take further action under Australia's consumer protection laws. In addition, our dispute resolution processes do not circumscribe (restrict or limit) your right to pursue other legal remedies.

2) Transfer to another institution:

- a) Transfer to the University of Sydney: We charge an administration fee of up to A\$200.
- b) Transfer to another institution: If you transfer to a formal degree or diploma course at another university, TAFE or College, you **MAY** be eligible for a transfer to that institution of up to **80%** of the remainder of your tuition fees. Both CET and the other institution must approve the transfer. You should request a transfer on the CET 'transfer form'. If you have condition 8206 on your student visa, you may need immigration approval to transfer. CET will notify Immigration where necessary.

Please note: By law, CET is not obliged to agree to a transfer of money. See (1), section (e) above.

3) Satisfactory attendance

The Australian Government Immigration Department insists that students on student visas attend **80% or more** of their classes. Renewal of your student visa depends on this.

4) Courses, term dates and fees

The Centre for English Teaching reserves the right to review **courses, term dates and fees at any time without notice**. We will notify you of any changes prior to the commencement of your course.

5) Academic English

The minimum entry requirement for this program is normally pre-intermediate level. Students take a placement test on arrival to assess their proficiency level.

6) Minimum entry age

Students must be at least 18 years old (except for Study Tours).

I declare that the information I have given in this application is true and correct. I have read the above terms and conditions and agree to abide by them. I understand that the first day I arrive is orientation. There are no classes that day. I understand there are no classes on Public Holidays. If a program is cancelled or not available before the course start date, I understand that the Centre for English Teaching will either place me in another course or refund the tuition fee if no suitable course is available.

Signature

Date day / month / year



Centre for English Teaching

Please send the completed form to:
Centre for English Teaching
Sydney University (G01)
NSW 2006
Australia

OR fax to:
61 2 9036 7908

Personal Details

Family name:

Given name(s):

Date of birth: day / month / year Sex: M F

Country of citizenship:

Country of birth:

Visa type:

Passport No. (if in Australia):

I will apply for my visa in: City Country

Occupation:

Postal address in home country: (compulsory)

Postcode:

Phone no: Fax no:

Email:

Postal address in Australia (if known):

Postcode:

Phone no: Fax no:

Mobile (in Australia):

How did you hear of CET?

- Agent Ex CET friend Newspaper
 Education exhibition Internet Australian Embassy
 Home country university Friend University of Sydney
 Transfer from other college Magazine

What is your highest educational qualification?

Qualification:

Year of completion:

Institution/School/University:

What is your level of English?

	Speaking/Listening	Reading/Writing
Elementary	<input type="checkbox"/>	<input type="checkbox"/>
Intermediate	<input type="checkbox"/>	<input type="checkbox"/>
Advanced	<input type="checkbox"/>	<input type="checkbox"/>

Have you taken one of these English tests?

Test	Date taken	Score				
TOEFL						
TWE						
		Reading	Writing	Listening	Speaking	Total
TOEFL iBT						
IELTS						

Which program do you wish to study?

- General English (EGP) Intensive Academic Writing (IAW)
 Cambridge FCE & CAE examinations Graduate Academic Skills (GAS)
 Academic English (EAP) Intensive Entry Program (IEP)

Course details:

Start Date: day / month / year Finish Date: day / month / year

Number of weeks:

Do you plan to study at university in Australia?

Yes No Which university?

Which course?

What is the IELTS requirement? 6.5 7.0 7.5

What level? Undergraduate Postgraduate Foundation

If you have a conditional offer from Sydney University

(a) what is your reference number?

(b) would you like to 'package' your English program with your university studies? Yes No

- If 'Yes', please send the following documents:
 1. Conditional offer from University of Sydney
 2. IELTS or TOEFL results (less than 2 years old)
 3. A completed CET application form



Our 2007 dates

Academic English (EAP) General English (EGP)*

Term 1	8 January.....9 February
Term 2	19 February23 March 26 March.....27 April
Term 3	7 May.....8 June 12 June.....13 July
Term 4	23 July.....24 August 27 August.....28 September
Term 5	8 October.....9 November 12 November.....14 December

Each term is 10 weeks (2 x 5-week modules), except term 1.

* These are recommended entry dates for **General English**.
However you may join ongoing courses **any Monday**.

Intensive Academic Writing (IAW) Graduate Academic Skills (GAS)

8 January.....9 February
12 June13 July

Intensive English Program (IEP)

30 April.....13 July
5 November.....8 February 08

Advanced Skills for Academic Success (ASAS)

22 January.....16 February
12 June.....6 July

Cambridge English

FCE (First certificate in English) and
CAE (Certificate in Advanced English)

2 October.....7 December



"Quels que soient les soucis que vous pouvez rencontrer au niveau des cours ou de la vie quotidienne vos professeurs et l'équipe administrative sont là pour vous aider. Même loin de chez vous, vous ne serez jamais seul en Australie!"

Véronique Glémarec, (France)
with her teacher Nicole

Our 2007 fees All fees are in Australian Dollars

Tuition per week

2 – 10 weeks	\$355
11 – 24 weeks	\$350
25 – 34 weeks	\$345
35 – 50 weeks	\$340

Other fees

Administration fee.....	\$240
University library (Fisher) card – optional.....	\$50

Overseas student health cover (OSHC)

	Single	Family
3 months.....	\$88	\$176
6 months.....	\$175	\$349
9 months.....	\$262	\$524
12 months.....	\$349	\$698

Note: You should allow a minimum of \$16,000 to cover your living expenses (outside tuition) for each year you study in Australia.

More information

Contact us at:

Centre for English Teaching
Sydney University
Phone: 61 2 9036 7900
Fax: 61 2 9036 7910
email: info@cet.usyd.edu.au

Find us at:

Wentworth Building, Level 5
Corner of City Road and Butlin Avenue
Darlington, Sydney

Contact one of our CET agents in your country.

Find them at: www.usyd.edu.au/cet



Group of Eight



FIYTO

