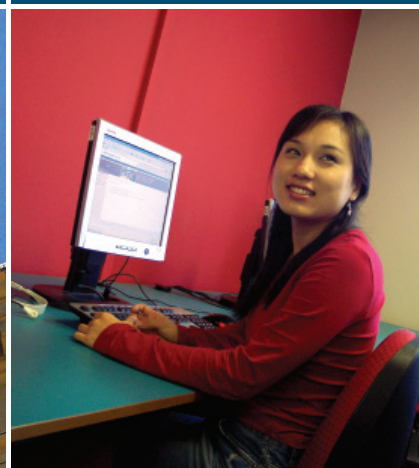


English Language Programs and Services



2005/06

welcome



Welcome to RMIT English Worldwide

Established in 1968, RMIT English Worldwide (REW) offers high quality English language services for social, business or academic purposes in Australia and internationally. Students can study RMIT English Worldwide programs in the Melbourne, Australia centre or other offshore partner centre sites.

The RMIT English Worldwide Melbourne centre is located in the heart of Melbourne opposite the main campus of RMIT University and is one of Australia's most highly regarded English language centres. RMIT English Worldwide provides an excellent pathway for further study at RMIT and other universities.

For more information about RMIT University/s programs and services for international students, visit www.rmit.edu.au/international.

IELTS Centre

RMIT English Worldwide, Melbourne is currently the third largest test centre in Australia and the largest in Victoria. There are at least two tests scheduled each month with up to four tests in high demand periods.

For students who are planning to take the IELTS Test, RMIT English Worldwide offers a number of part time and full time IELTS Preparation programs for either the General Training or Academic modules of the test.

English language courses and services

RMIT English Worldwide offers English language courses for students who:

- are on a pathway to further study at RMIT University (direct entry through the English for Academic Program) or
- are planning to study at other institutions (EAP + IELTS Preparation and IELTS Test) or
- wish to study General English only.

English for Academic Purposes (EAP)

EAP courses are designed to prepare students for study at RMIT and other universities. The EAP program is taught across three levels at RMIT English Worldwide: Upper Intermediate, Advanced 1 and Advanced 2. Students wishing to enter RMIT University TAFE programs should successfully complete the EAP Upper Intermediate level. Students planning to enter RMIT University Higher Education programs should successfully complete EAP Advanced 2 level.

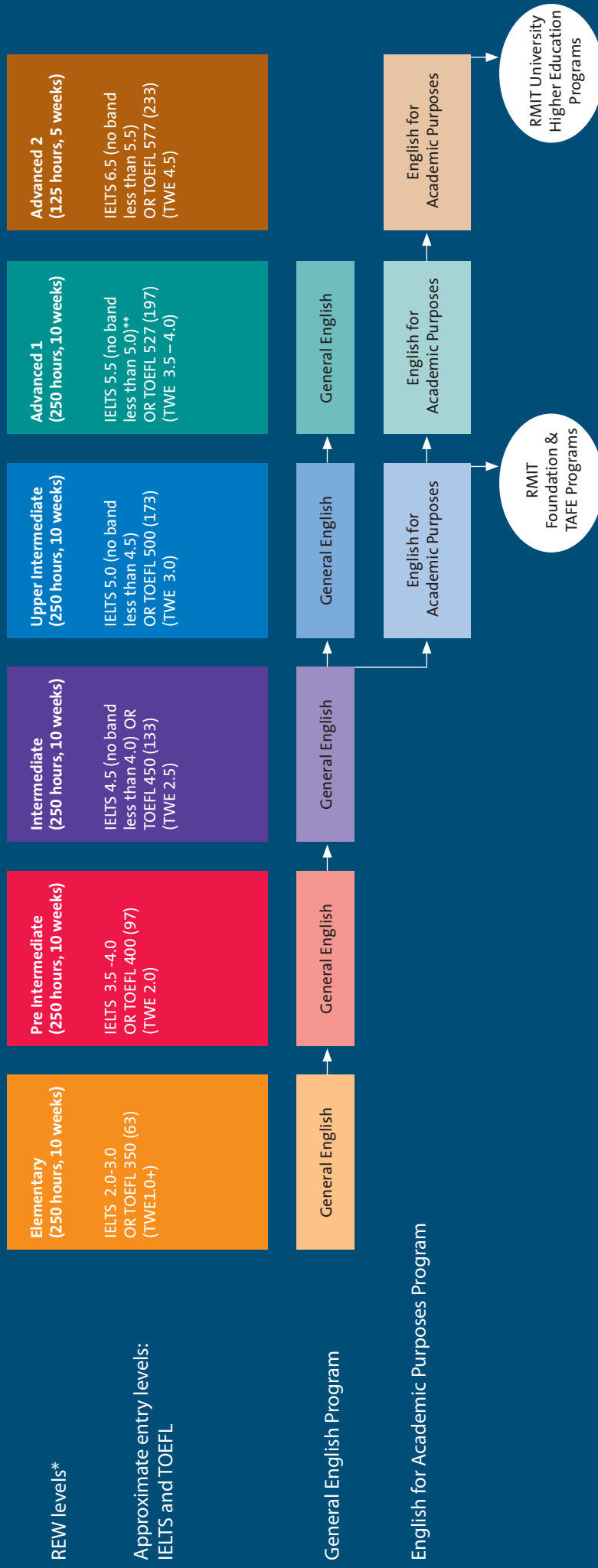
General English

The General English program helps students to develop their ability to communicate in English in a range of social contexts through both traditional classroom-based learning and computer-assisted language learning. General English is taught across five levels at RMIT English Worldwide from Elementary to Advanced 1.

The pathway diagram on the following page is a guide to programs, levels and pathways.

RMIT English Worldwide Pathways

RMIT English Worldwide offers courses for students who are on a pathway to further study at RMIT University (direct entry through successful completion of the EAP programs), and students who wish to study General English only. The following is a guide to programs, levels and pathways.



Note: The IELTS and TOEFL scores indicated on this table as entry points for the different levels are approximate and should be used as a guide only.

* Each REW level comprises Module A (125 hours or 5 weeks) and Module B (125 hours or 5 weeks) with a total of 250 hours or 10 weeks except for Advanced 2 which is a single module of 5 weeks or 125 hours.

** In cases where evidence of IELTS 6.0 with no band less than 5.5 is provided, students may be admitted to Module B of Advanced 1. However, REW strongly recommends commencement at Module A.

study

Study at RMIT English Worldwide

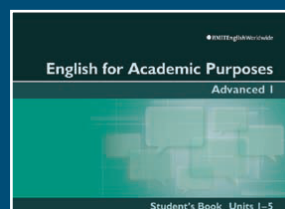
RMIT English Worldwide's teaching approach focuses on communicative teaching methodology. We use a unique combination of REW published courses and authentic materials. We believe that the most effective way of teaching English is not only to facilitate students' learning while they are with us, but also to help them develop the independent learning skills needed to keep learning after they leave. Through a student-centred, teacher-facilitated approach, REW provides the language, support and opportunities to help students become successful and autonomous learners of English.

- **Direct entry to RMIT University.**
Successful completion of the appropriate English for Academic Purposes course provides direct entry into academic programs at RMIT University, Melbourne.
- **Highly qualified teachers**
RMIT English Worldwide teachers have a high level of educational expertise and are active members of the international English language teaching and testing field.
- **REW-designed course materials**
REW-designed course materials help students meet the learning outcomes for the level and type of program they are studying.
- **Focus on independent learning skills**
Our teaching focuses on the particular needs of our students and developing their independent learning skills.
- **Professionally designed class materials**
Our commitment to academic quality includes using professionally designed class materials in the form of books, authentic texts, audiotapes, videos and visual materials. Computer technology is also extensively used with Computer-Assisted Language Learning (CALL) as a core component of our programs,



including provision for online learning. RMIT English Worldwide students also have access to a range of other multi-media packages to help them learn during and after classes.

- **Supplementary learning materials**
Planet English is used as part of English language courses. Planet English is an effective supplementary resource to assist with learning English. Teachers also make use of other commercially available publications to complement core materials.
- **Pre-entry, Continuous and End-of-Course Assessment**
RMIT English Worldwide students' English language level is assessed prior to the start of their program. This placement assessment ensures students join the correct class. During their course, students' progress is checked by informal monitoring, mid course assessment and end of course tests.
- **Excellent facilities**
RMIT English Worldwide has comfortable language classrooms, three state-of-the-art multi-media laboratories, an Independent Learning Centre (ILC) and a kitchen area and lounges. Students also have access to RMIT University facilities such as the library, sports and recreation centres, health services and computer laboratories.
- **Student Services**
RMIT English Worldwide's Student Services staff are available to help students settle into life and study in Australia, including organising airport pick-up, accommodation and orientation.





Other English programs and services

Teacher Training

RMIT English Worldwide has a specialist Teacher Training centre, offering a range of high quality programs, including introductory courses, teacher development workshops and Australian and internationally certified programs. These programs are delivered both at the Melbourne centre and offshore and can be customised for individual requirements.

Study Tours

RMIT English Worldwide offers study tours that are individually designed for student groups who wish to gain wider exposure to English while enjoying Australia. Groups can choose from a range of specific purpose programs of any length from a minimum of one week, and determine their own activities, accommodation, excursions and budget.

English for Industry

RMIT English Worldwide has a range of industry-focused English courses created to assist professionals with their career. They include Aviation, Corporate, Health as well as Oil, Gas and Energy. These programs can be customised to suit group and individual requirements with appropriate input from practising professionals.

Aviation English

RMIT Worldwide is a leader in English language development and delivery to the Aviation industry. The RMIT English Worldwide Aviation English program has been designed for pilots and air traffic controllers to meet the new proficiency standard set out by the International Civil Aviation Organisation. The program consists of a General English Aviation course, a Radiotelephony English course and Testing.

Corporate English

The RMIT English Worldwide Corporate English programs are designed to improve participants Business English skills and professional communication skills in order to operate effectively in the global workplace. Corporate English courses are tailored to meet the demands of individuals or groups.

IELTS Preparation for Industry

The RMIT English Worldwide IELTS Preparation for Industry program is a series of course book and computer-based lessons designed to help English language providers prepare students for the IELTS Test. For further information, email englishworldwide.ieltsprep@rmit.edu.au.

Business Partner Program

RMIT English Worldwide offers English language services internationally through an accredited Partner Program. The Program licenses universities, language centres, industry and other organisations to deliver our English programs in their native countries utilising local resources.

further
information

Visit: www.rmitenglishworldwide.com



About RMIT Training Pty Ltd

RMIT Training is a wholly owned subsidiary of RMIT University, one of Australia's largest technology universities. RMIT Training consists of a number of business units:

- RMIT English Worldwide
- RMIT Publishing
- RMIT IT Test Lab
- RMIT Workforce Solutions

About RMIT University

Established in 1887, RMIT is one of Australia's largest multi-sector universities and is a popular choice for international students studying in Australia. With over 56,000 students across five sites in metropolitan Melbourne and a diverse range of programs, RMIT is an ideal institution to pursue further studies. RMIT University is a member of the ATN (Australian Technology Network) a network of Australia's five leading technological universities.

RMIT English Worldwide

RMIT English Worldwide, Melbourne is accredited by NEAS (National ELT Accreditation Scheme) and is a member of English Australia and the University English Centres Australia (UECA). The business is also quality accredited to ISO 9001.

Level 6, 393 Swanston St
Melbourne 3000, Australia
Telephone: +613 9657 5800
Facsimile: +613 9663 8504
Email: englishworldwide@rmit.edu.au
Website: www.rmitenglishworldwide.com

Information correct at time of printing. Fees may be subject to change as a result of legislative requirements.

www.rmitenglishworldwide.com